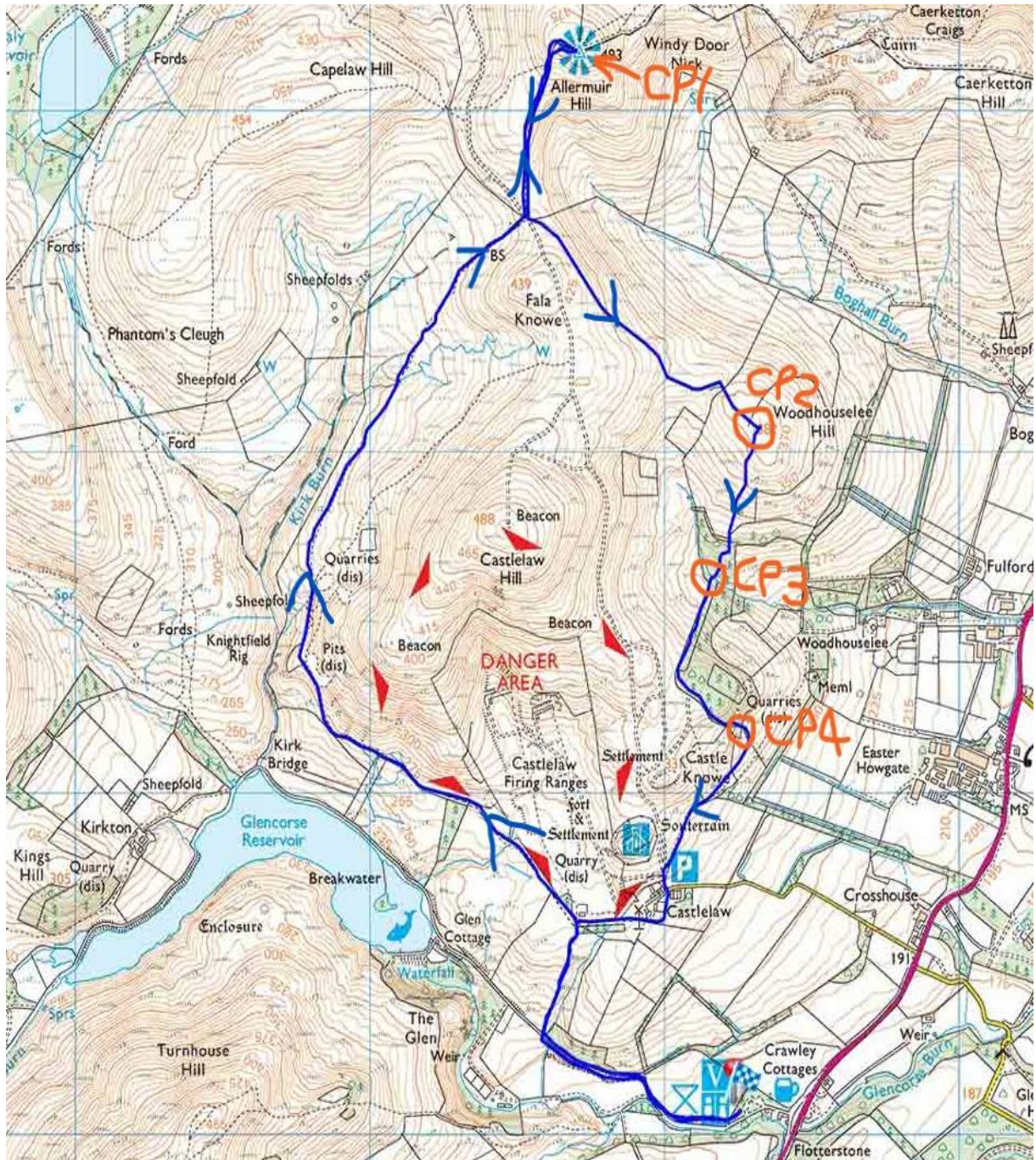


Woodhouselee Handicap



Woodhouselee Handicap

(1) The **Start/Finish** is the wooden bench a few yards along the path from the Flotterstone Café.



- (2) Follow the path until it joins the road. After about ½ a mile go through the gate to your right and uphill towards Castlelaw.



- (3) At the top you will arrive at a path. Turn left and follow the path for about 2.8 km as it winds around the West side of Castlelaw.



(4) At the end of the path, turn left over a cattle grid (or the stile) and head up to Allermuir [CHECKPOINT 1] **on the left side of the fence.**

In the race, look out for your 'targets' coming down the hill on the other side of the fence. When you reach Allermuir [CHECKPOINT 1] go through the gate and then immediately right over the stile and then head back down the way you came up **but on the other side of the fence.** You may catch sight of runners who will be chasing your down.



(5) When you reach a fence in front of you, go over it and turn left to find a faintish trod heading towards Woodhouselee Hill.

(Thank you , Fiona Kerray and Bramble for pointing the way here!)



(6) Woodhouselee Hill [CHECKPOINT 2] is a rather indistinct hill. You will need to cross a small dip on your way there. The top is marked with a meagre stick and three rocks.



- (7) From the top, look south and head straight down towards the right-hand edge of the tree line of the woods. You are going to be heading up where the blue arrow is. (If the cloud is down, good luck!!)
- There is no clear path on the descent down.



(8) As you descend, you are looking for a crossing point [CHECKPOINT 3] of a small burn marked by 4 closely-gathered trees on the far bank (see photo).

Cross there and head straight up the hill following the path just inside the tree line.





CHECKPOINT 4 (“the bit of fence with no barbed wire” see photo) is the most difficult one to find but if you stick just inside the tree line you will reach it. Don’t leave the woods until you find it. You will swing 90 degrees from S to SE as you go towards it. Once you find it, cross the fence and then go through the gate a couple of hundred yards further down.



(10) From here you head back to Castlelaw car park, heading through one more gate on the way.



(11) At Castlelaw you follow the Pentland Skyline route through the car park and the gate on the far side, the path takes you to the point where you turned left earlier. At this point head left downhill and follow your route back to the Start/Finish and don't forget to take the path (not the road) for the final few hundred metres.